

DIGITAL MULTI-MEDIA PRESS

XANTÉ

EN/PRESS®



■ **PlateMaker 8**
INSIDE

■ **Includes iQueue 14**
*Simply Brilliant Workflow
with iQueue Mail - USPS® certified
address verification, correction,
sorting, and barcoding!*



■ **ENTERPRISE-SP**
COMPACT HIGH SPEED SYSTEM



Reliable. Profitable. Production.

The En/Press Digital Multi-Media Press with the patented Enterprise High Speed Feed System offers users an affordable way to go digital and meet the demand for fast, full-color printing. Enterprise's groundbreaking design features a straight feed path for a faster and smoother delivery. The complete digital solution is powered by iQueue Simply Brilliant Adobe Postscript PDF® Workflow that offers Dead-On Spot Color Matching, advanced variable data capabilities, full imposition, intelligent sequential numbering, over a thousand royalty free customer-ready templates and so much more.

Improve In-House Productivity

En/Press Digital Multi-Media Print Systems allow you to do more for your customers, in-house

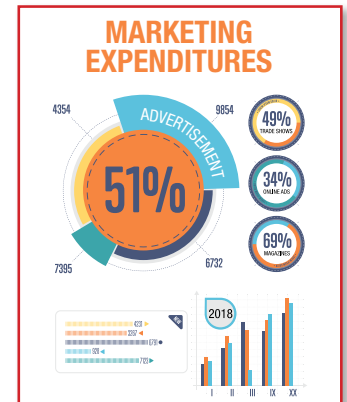
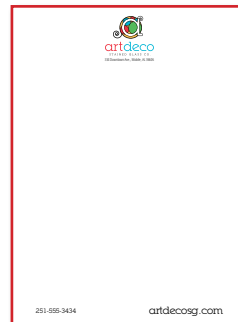
- Print on a wider variety of media and in a wider range of sheet sizes.
- Up to 4,000 full color envelopes per hour
- Features a lower cost per sheet
- Run full color jobs including variable data in one pass.
- iQueue Simply Brilliant Workflow automates prepress production and provides critical color adjustments.



Booklets



NCR Forms



Full color sheets, envelopes and cards



Label stocks

Astonishing Full-Color Results

The En/Press Digital Series features a multi-bit print engine that delivers production color and print quality your customers demand

- Resolutions up to 4800 for exceptional sharpness, clarity and color quality.
- iQueue can match any spot color that can be created with CMYK **dead-on every time**. Xanté's patented RightON® color matching technology makes spot color matching simpler than ever.
- New HD toner offers a wider color gamut. The smaller particles enable the En/Press Digital Color Series to capture subtle changes in color and tone.
- Output is waterproof and laser safe.

More Media / Feed Choices

Outstanding media flexibility allows you to offer your customers more and helps eliminate costly outsourcing

- Prints on a variety of stocks including: Uncoated, coated, NCR, card stocks, textured stocks, label stocks and envelopes (from 3.5" x 3.5" up to 13" x 49").
- Prints on 18pt cover (400gsm).
- Print oversized sheets / banners up to 13" (330 mm) x 49.6" (1260 mm).

PHS supports providers by educating patients and staff on emerging technologies, facilitating specimen collection, administrative support and patient outreach. PHS partner labs offer rapid turnaround on results delivered through easy-to-use secure portals.

Precision Prescribing
Until Pharmacogenomics (PGx) testing was developed, prescribing physicians had to rely on recommendations during when prescribing a drug therapy for their patients. However, this is now predictive of all patients. PHS partner labs offer customized reports that review a patient's genetic variants and current list of medications, and offer analysis of risk and for recommendations for alternative therapies and dosages.

CONTACT US
Personalized Health Solutions, LLC
888-947-4748 251-706-2777
www.personalizedhealthsolutions.com

Advantages that PHS offers healthcare providers and patients:

- Eliminate or reduce "trial and error" prescribing of medication
- Understand individual drug response to determine the right drug and right dose
- More precise health treatment plans resulting in greater likelihood of desired outcomes
- Reduce negative side effects
- Control or reduce healthcare costs

The future is Personalized Medicine.
Our mission is to bring health solutions to providers and their patients which personalize medicine, improve patient adherence, reduce cost and achieve better outcomes.

888-947-4748
251-706-2777
www.personalizedhealthsolutions.com

Computer-to-Plate

PlateMaker 8

INSIDE

Xanté is pleased to announce a revolutionary advancement in Computer-to-plate (CTP) printing technology. The En/Press Revolutionary Digital Multi-Media Press with PlateMaker 8 inside is a brand new polyester CTP system. Specifically designed for small commercial printers, this solution is low cost, high quality, chemical free, and fast. The best part is that it's all contained WITHIN the En/Press which is already the best way to print your envelopes, NCR forms, stationery, invitations, announcements and more!



PlateMaker 8 Specifications

Myriad 2 Plates	Available in the following sizes: 10" x 15" - 13" x 19 ⁷ / ₈ "
340mm Option	13 ³ / ₈ " x 19 ⁷ / ₈ " (340mm x 505mm)
Plate Thickness	4 mil plates

Customize with the Feeder System that works for your needs. (Enterprise-SP or the complete Enterprise Feed System)



- **THE BEST envelope feed system IN THE WORLD**
- Load up to 1,000 #10 envelopes and walk away
- Quick adjust guides for faster media changes

Available in *five* configurations:

1. Standalone
2. Standalone with the Compact Enterprise-SP Feeder (500 #10 envelopes)
3. Digital Production Press with the Enterprise (1,000 #10 envelopes)
4. Additional Trays (2 Extra trays for up to 12.5"x18")
5. High Capacity (Hi-Cap Tray for Letter or A4)



- **NEW COMPACT DESIGN**
33" x 11.5" x 20"
- Load up to 500 #10 Envelopes
- Media from 3.5" x 3.5" up to 13" x 49"
- Load media on-the-go



US Pat. No. 8939274 B1



ENGINE SPECIFICATIONS

Configuration	Desktop
Technology	Laser-beam scanning & electrophotographic printing with dual component toner development, 4-drum tandem method, output water proof and laser safe
Printing Speed	Color 60 ppm / Black & White 60 ppm / 75 #10s ppm 60, 26 and 17 ppm for letter/A4 depending on media thickness Envelopes less than 8.5" in width 25 ppm
Warm-Up Time	22 seconds or less
First Print Speed	8 seconds or less
Duplex Print Speed	Near 100% productivity for all paper sizes
Print Resolution	600, 1200, 2400 or 4800
Input Capacity	Standard: 2 x 550 sheets + 100-Sheet Bypass Tray
Output Capacity	Standard: 500 sheets face down
Paper Sizes	
Feed Tray 1:	Letter / A4
Feed Tray 2:	Min: 7.17" W x 5.83" L (182 x 148 mm) Max: SRA3* 12" W x 18" L (304 x 457 mm)
Multi-Purpose Tray:	Min: 3.5" W x 3.5" L (89 x 89 mm) Max: 13" W x 49.6" L (330 x 1260 mm)*
High Capacity Tray:	8.5" W x 11" L (216 x 279 mm)
Dual Tray:	Min: 7.17" W x 5.83" L (182 x 148 mm) Max: SRA3* 12" W x 18" L (304 x 457 mm)
Paper Weights	
First / Second Tray:	16 - 68 lb. Bond - 14pt Cover (60 - 320 gsm)
Bypass Tray:	16 - 68 lb. Bond - 18pt Cover (60 - 400 gsm) Feed source for Labels, OHP and Envelopes
Duplex Unit:	60 - 256 gsm
Paper Types	Bond, Plain, Recycled, Preprinted, Special, Color, Letterhead, Card Stock, Glossy, Coated, Labels, OHPs and Envelopes (4 Bar, Monarch, #10, window* and larger)
Auto Duplex	Standard
Dimensions (Base Model)	23.2" W x 27" D x 28.6" H (587 x 685 x 725 mm) (Standard Configuration)
Weight (Base Model)	With consumables loaded (except toner) 187 lb. (85 kg)
Power	120-127V / 220-240V (50/60 Hz)
Operating Power	992W Consumption
Maximum Power	1.854 kw or less
Energy Saver	2.2W

PRINTER CONTROLLER (Standard)

CPU	Intel Atom Processor Bay Trail 1.75GHz
Memory	2 GB
Hard Disk Drive	320 GB HDD Standard on all models
Printer Languages	PCL 5c, PCL 6, RPCS, Adobe® PS® 3™, PDF Direct Print
Fonts	Standard: 45 PCL fonts, 13 Intl Fonts, 136 PS 3 fonts Optional: OCR and Barcode fonts available
Standard Interface	Ethernet (1000Base-T/100Base-TX/10Base-T), USB 2.0, SD Slot
Operating Systems	Windows 7 to current / Mac OS 10.7 to current

SYSTEM SPECIFICATIONS

ENTERPRISE HIGH SPEED FEEDER

Capacity	Load up to 1,000 #10 (241 x 105mm) Envelopes
Media Sizes	3.5" x 3.5" (89 x 89 mm) - 13" x 49.6" (330 x 1260 mm)
Paper Weights	16 - 68 lb. Bond - 18pt Cover (60 - 400 gsm)

ENTERPRISE-SP COMPACT HIGH SPEED FEEDER

Dimensions	33" x 11.5" x 20" (84cm x 29cm x 51cm)
Capacity	Load up to 500 #10 (241 x 105mm) Envelopes
Paper Sizes	3.5" x 3.5" (89 x 89 mm) - 13" x 25.5" (330 x 648 mm)
Paper Weights	16 - 68 lb. Bond - 18pt Cover (60 - 400 gsm)

SUPPLIES

Consumables	Yield (ISO 19,798 Yields)	Consumables	Yield
Black Toner	43,000 pages	Yellow Toner	34,000 pages
Mag. Toner	34,000 pages	Cyan Toner	34,000 pages
Fuser	160,000 pages*	Imaging Drums	120,000 pages*
Image Transfer Belt	200,000 pages*		
Part Numbers			
Cyan Toner	200-100373	Black Drum	200-100380
Magenta Toner	200-100374	CMY Drum Set	200-100381
Yellow Toner	200-100375		
Black Toner	200-100376		
110V Fusing Unit	200-100383	Transfer Belt	200-100382
220V Fusing Unit	200-100384	Waste Toner Bottle	200-100387

En/Press ships with starter toner cartridges that yield 21,500 pages for Black and 17,000 pages for each color. *based on letter/A4 size pages at 5% coverage. Use only Xanté or Xanté approved consumables.



iQueue Simply Brilliant Workflow (Included)

Digital Color Workflow with Advanced Color Matching and File Management Tools



FULLY VERIFIED, CORRECTED, SORTED, AND BARCODED!

Available Features:

- USPS® certified address verification, correction, sorting, and barcoding
- Over a Thousand Design Templates
- Multi-Part Form Design
- Sequential Numbering
- Booklet Creation
- Universal Print Driver
- Independent CMYK Color Controls
- Patented Spot Color Matching
- Job Cost Estimator
- Full Imposition and Tiling
- Custom Barcode Generator
- Import Variable Data with Intelligent Mail barcodes*
- Automatic Creep Adjustment and more

www.da-com.com

P: 314-442-2800

E: presales@da-com.com



©2021 Xanté Corporation. All rights reserved. Xanté, HWC, iQueue, iQueue Mail and Right-On are trademarks or registered trademarks of Xanté Corporation. Adobe, Adobe PDF, and PostScript 3 are registered trademarks of Adobe Systems, Incorporated. USPS® is a registered trademark of the United States Postal Service. All other trademarks or registered trademarks are the property of their respective owners. The Specifications listed here are subject to change without notice.

*Paper size only. **Laser safe window envelopes only. Patent pending technology. *Call for details.

11.09.2021